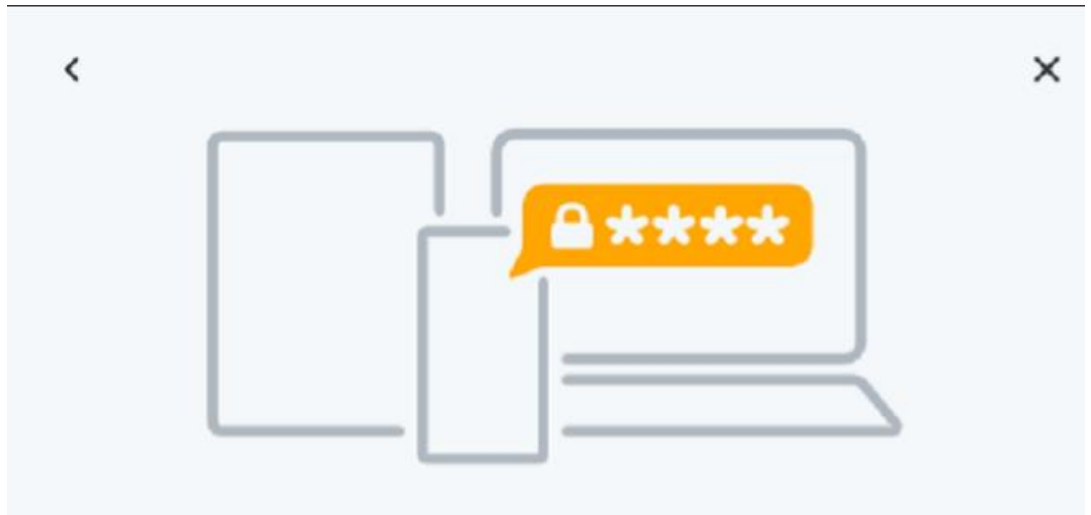


How to configure/Setup AOL account in Outlook

1. Generate app password from AOL Portal.
 1. **Generate an app password**
 1. [Sign in to your AOL Account Security page.](#)
 2. Click **Generate app password** or **Generate and manage app passwords.**
 3. Enter your app's name in the text field.
 4. Click **Generate password.**
 5. Follow the instructions below the password.
 - Be sure to enter the password into your app without any spaces.
 6. Click **Done.**
2. App password is show looks like below image.
- 3.



Your app password

Your one-time app password for **Outlook** is:

llwl wzfp mksh ollj

[Copy](#)

This is a one-time password -- you do not need to remember it. It does not replace your normal password.

How to use this password

1. Sign into the app/service using your normal username
2. Instead of your normal password, enter the app password above

If you stop using **Outlook**, you can delete the app password here to remove **Outlook**'s access to your account.

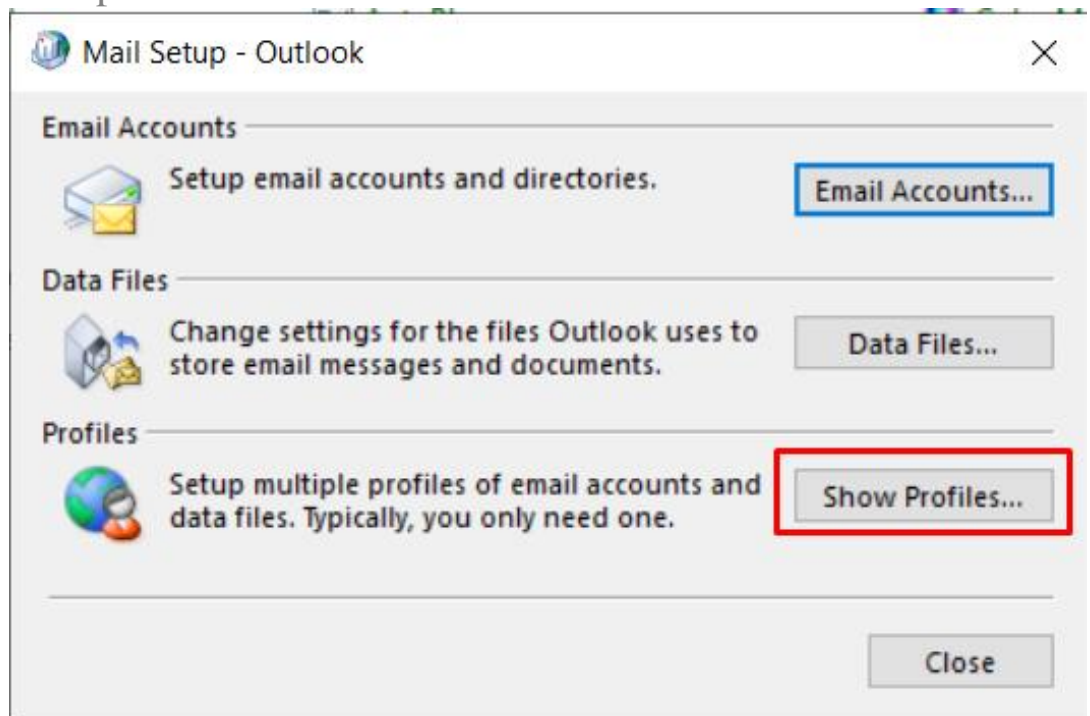
2. copy the password and go to user's computers control panel and select outlook.
- 3.

Adjust your computer's settings



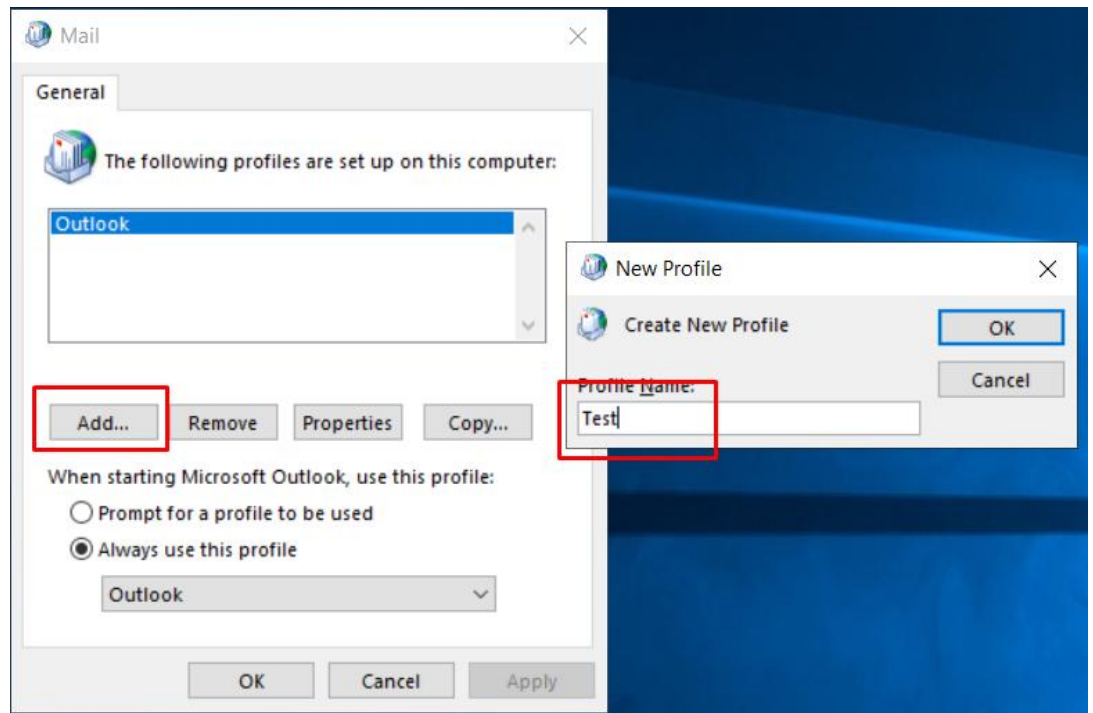
4. got to show profiles

1.



5. add new profile.

1.



6. manual setting.

1. Add Account

Auto Account Setup
Manual setup of an account or connect to other server types.

☐ **Email Account**

Your Name:
Example: Ellen Adams

Email Address:
Example: ellen@contoso.com

Password:
Retype Password:
Type the password your Internet service provider has given you.

☒ **Manual setup or additional server types**

< Back Next > Cancel Help

7. select pop or IMAP.

1.

Add Account

Choose Your Account Type

☐ Microsoft 365
Automatic setup for Microsoft 365 accounts

Email Address:
Example: ellen@contoso.com

☒ POP or IMAP
Advanced setup for POP or IMAP email accounts

☐ Exchange ActiveSync
Advanced setup for services that use Exchange ActiveSync

< Back Next > Cancel Help

8.

User Information

Your Name:

Email Address:

Server Information

Account Type: ▼

Incoming mail server:

Outgoing mail server (SMTP):

Logon Information

User Name:

Password:

9.

General **Outgoing Server** Advanced

Server Port Numbers

Incoming server (IMAP):

Use the following type of encrypted connection: ▼

Outgoing server (SMTP):

Use the following type of encrypted connection: ▼

Server Timeouts

Short Long 1 minute

Folders

Root folder path:

Sent Items

☐ Do not save copies of sent items

Deleted Items

☐ Mark items for deletion but do not move them automatically

Items marked for deletion will be permanently deleted when the items in the mailbox are purged.

☒ Purge items when switching folders while online

Online URL: <https://support.quikbox.com/article.php?id=263>