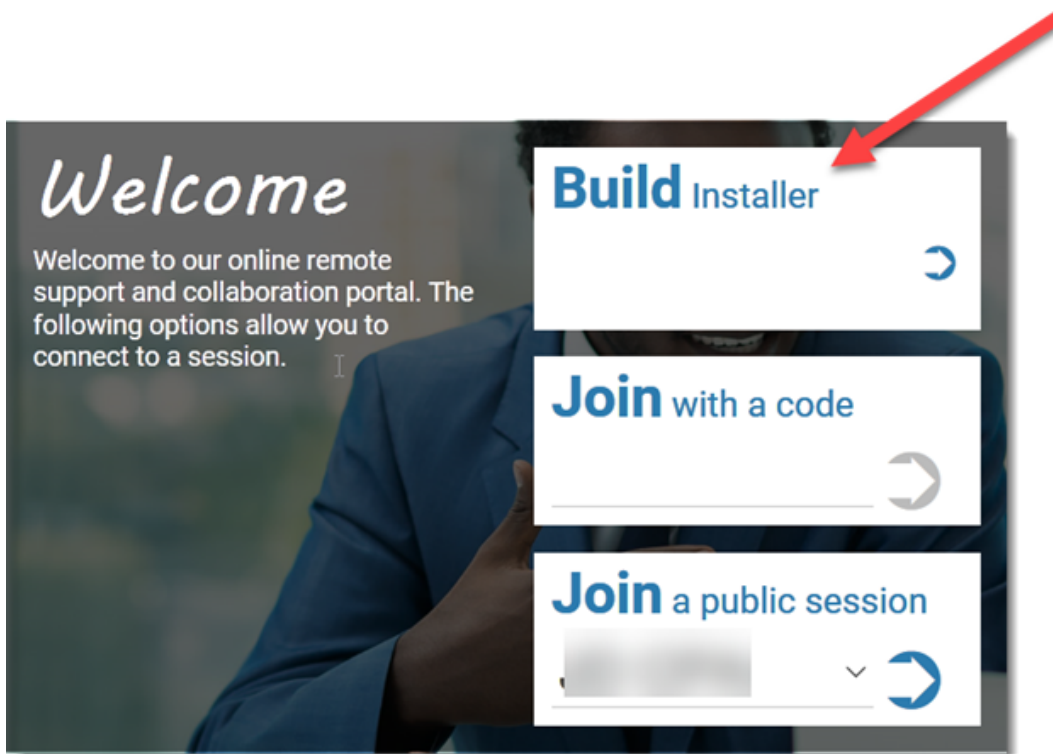


# Adding your Computer to a Remote Site

1. Build an access agent installer.



## Build Installer

Build an installer to deploy to remote machines and permanently install the access agent. After installation, the agent will appear in the Access section.

Label your machines using the following fields, and pick your installer type:

Name: Use Machine Name

Organization:

Type: Windows (.exe)

Select an option to share your installer:

SEND LINK COPY URL DOWNLOAD

**DONE**

- From the drop-down menu, select either, “Use Machine Name” or “Use Specific Value.”
- The “Use Machine Name” option will label the access session by the name of the machine.
- “Use Specific Value” will prompt you to enter your own value.
- By default, the name of the access session will be the name of the machine.

## Build Installer

Build an installer to deploy to remote machines and permanently install the access agent. After installation, the agent will appear in the Access section.

Label your machines using the following fields, and pick your installer type:

Name:

Use Machine Name

Organization:

Use Machine Name

Use Specific Value:

Type:

Windows (.exe)

Select an option to share your installer:

SEND LINK

COPY URL

DOWNLOAD

DONE

- Windows (.exe) – Will fetch a compatible version of .NET if the target computer does not have it
- Windows (.msi)
- Mac OS X (.pkg) – May require a reboot before the access session is visible on your Host page
- Debian Linux (.deb)
- Red Hat Linux (.rpm)
- Mac/Linux (.sh)

Build Installer

×

Build an installer to deploy to remote machines and permanently install the access agent. After installation, the agent will appear in the Access section.

Label your machines using the following fields, and pick your installer type:

Name:

Use Specific Value:

▼ John Doe (jdoe)

Organization:

Type:

Windows (.exe)

▼

Select an option to

SE

Windows (.exe)

Windows (.msi)

Mac OS X (.pkg)

Debian Linux (.deb)

Red Hat Linux (.rpm)

Mac/Linux (.sh)

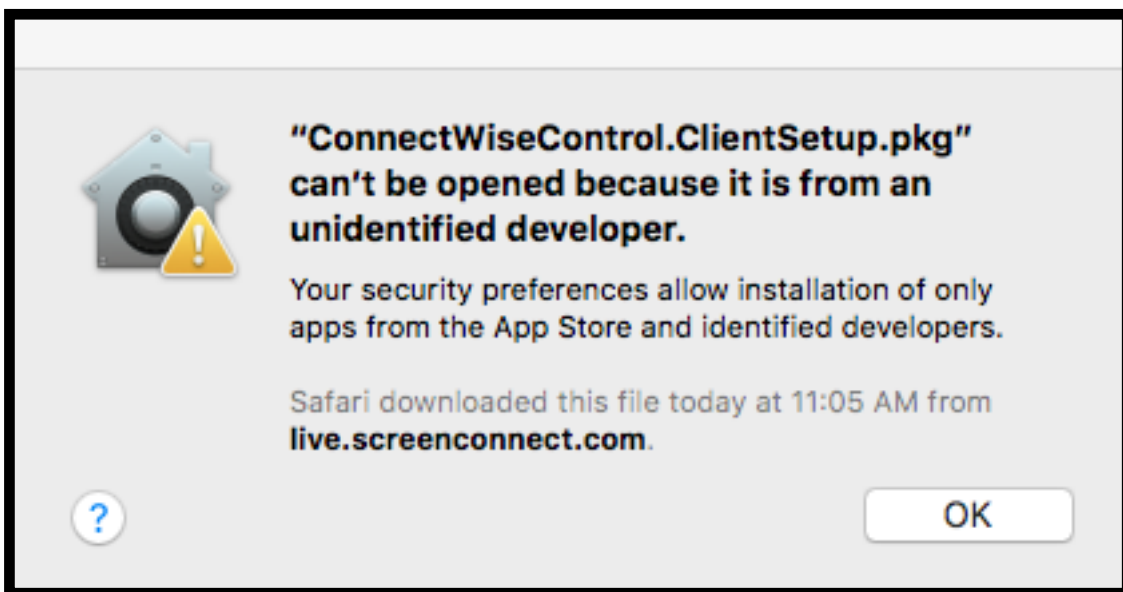
DONE

Windows (.msi)

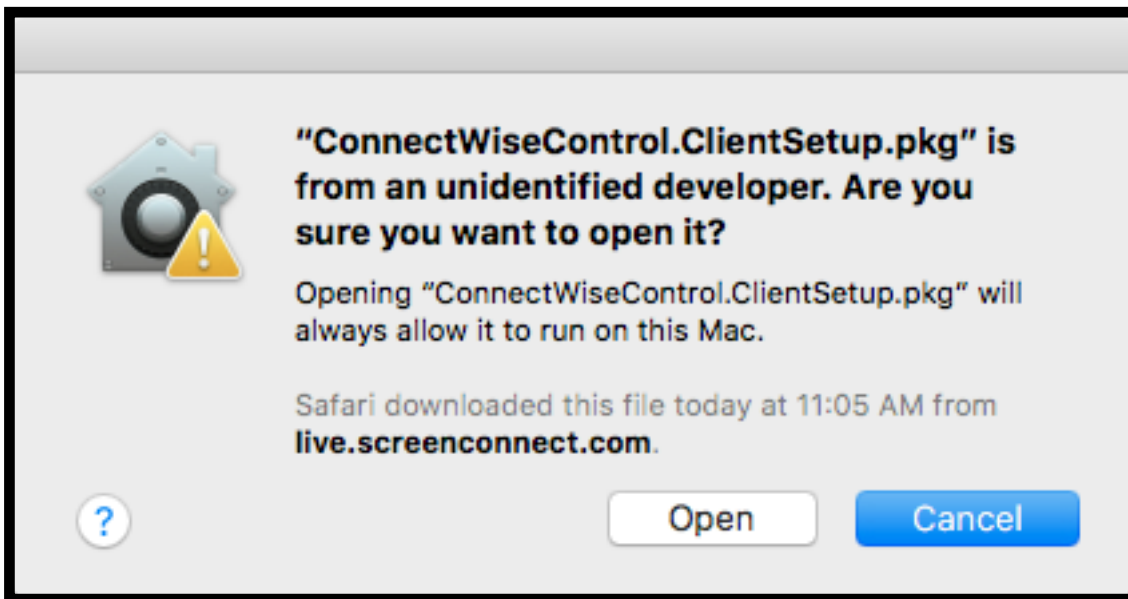
## Windows (.exe)

## macOS / OS X (.pkg)

- Double-click on the downloaded .pkg file.



- To continue installation, open Finder. Navigate to the location of the downloaded .pkg file, and then press Ctrl+Click to open the context menu. Select "Open," and you should see a similar warning with an option to open the file.



- Follow the wizard to complete the installation of the ConnectWise Control access client.

**Debian Linux (.deb)**

**Red Hat Linux (.rpm)**

**Mac/Linux (.sh)**

Online URL: <https://support.quikbox.com/article.php?id=28>