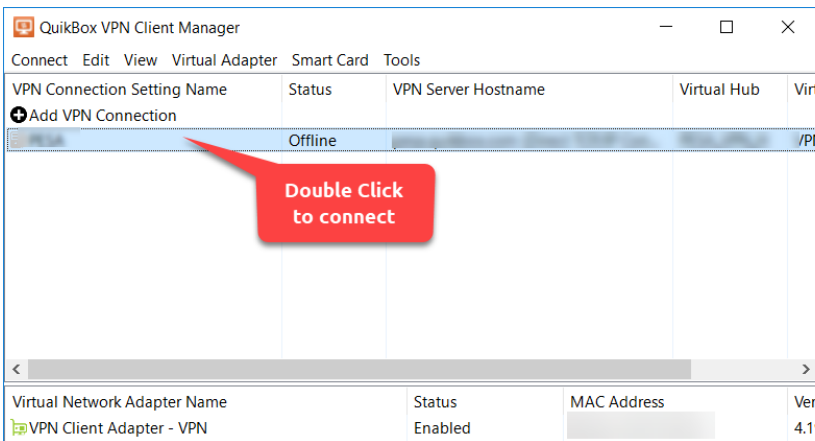
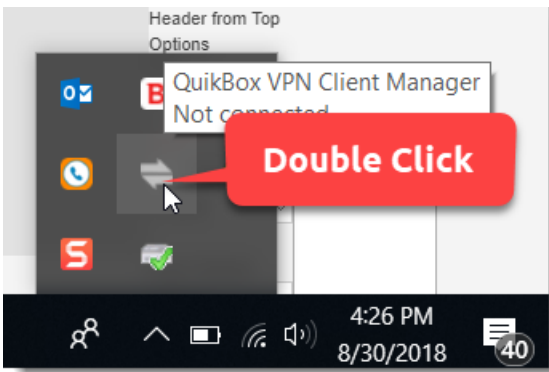


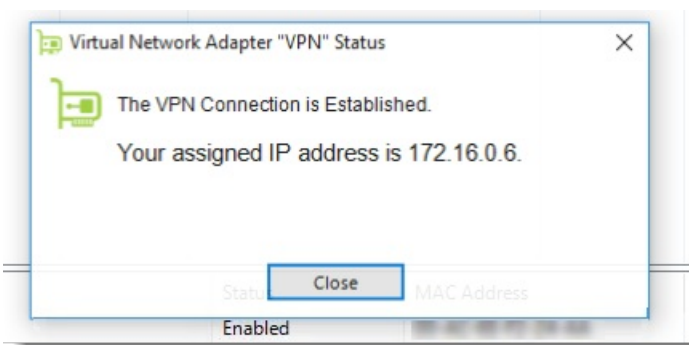
Connecting to a VPN Session

To start the VPN connection of a registered connection setting, double-click the connection setting or click [Connect] on the [Connect] menu.



Establishing a VPN Connection

When a VPN connection is established, the connection status changes to Connected (Established). Depending on the Windows setting, when the status of the Virtual Network Adapter changes from the network cable being unplugged to the VPN client being online, the notification [Connected] is displayed in the notification area of the taskbar.



Status of the Virtual Network Adapter Changes When a VPN Connection is Established.